



## CASH TYPE G-60 1¼" AND 1½" PRESSURE REGULATOR INSTALLATION INSTRUCTIONS

Before installation, these instructions must be carefully read and understood.

---

### DESCRIPTION

The Type G-60 high capacity, all purpose pressure reducing and regulating valve automatically reduces a high inlet pressure to a lower delivery pressure and maintains the lower pressure within reasonably close limits.

### SPECIFICATION DATA

**Service:** Air, water, oil and gases.

**Sizes:** 1¼" and 1½"

**Connections:** NPT Threads internal inlet and outlet

**Body Material:** Iron, Bronze, Stainless Steel.

**Maximum Temperature:** 700°F (371°C)

**Maximum Initial Pressure:**

For Iron bodies: 400 psi (27.6 bar)

For Bronze bodies: 400 psi (27.6 bar)

For Steel bodies: 700 psi (48.3 bar)

**Capacity:**

For specific capacity information, consult the factory.

### GENERAL INSTALLATION INSTRUCTIONS

The Type G-60 regulator should be installed in the horizontal position with the spring chamber upright. For other installation requirements consult the factory. For ease of operation and maintenance, it is suggested that manual shut-off valves be installed upstream and downstream from the valve. Before installing the valve, the piping and valve should be thoroughly flushed out to remove any foreign material. Install the valve with the inlet pipe fitted to the inlet connection identified on the valve body. On valves with threaded connections, use a good pipe joint compound on the male pipe threads and do not over tighten the valve connections.

### CONSTRUCTION

See component description for materials of construction.

### OPERATING INSTRUCTIONS

#### Adjusting the Delivery Pressure:

The regulator's delivery pressure setting is adjusted by turning the adjusting screw (1) at the top of the spring chamber (3) after loosening the adjusting screw lock nut (2). To increase the delivery pressure, turn the adjusting screw clockwise (into the spring chamber). To decrease the delivery pressure, turn the adjusting screw counter-clockwise (out of the spring chamber). Tighten the adjusting screw lock nut after the adjustment has been made.

### MAINTENANCE INSTRUCTIONS

#### CAUTION

*Before attempting to replace any spare parts, be sure to shut off all pressure connections to the valve. With the valve closed however, system pressure could still be locked between the shut off valve and the inlet and/or outlet sides or the regulator. Before proceeding with any valve service, be certain to relieve the pressure from both sides of the regulator.*

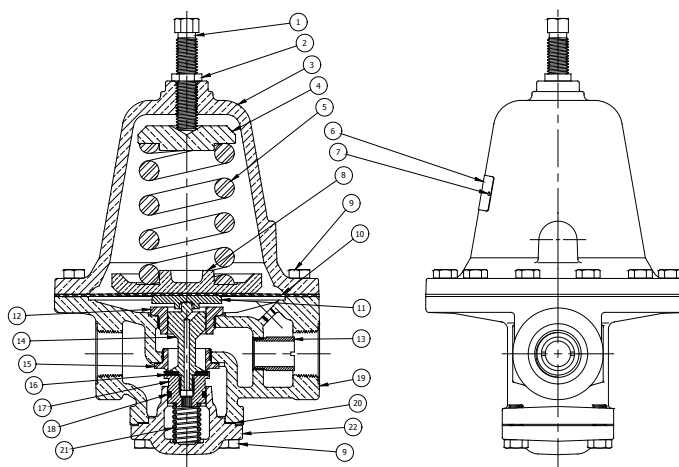
*Refer to section view for parts identification. Repair parts can easily be installed without removing the regulator from the line.*

# CASH TYPE G-60 1¼" AND 1½"

## PRESSURE REGULATOR INSTALLATION INSTRUCTIONS

No.	Component Description	Construction
1	Adjusting Screw	316 SST
2	Lock Nut	Brass
3	Spring Chamber	Bronze, Iron or SST
4	Spring Button	Brass
5	Pressure Spring	SST
6	Name Plate	Aluminum
7	Drive Screw	SST
8	Pressure Plate	Brass
9	Screw	Steel
10	Diaphragm	Buna-N
11	Pusher Post Button	Brass or SST
12	Guide Bushing	303 SST
13	Nozzle	Brass or SST
14	Pusher Post	Brass or SST
15	Seat Ring	303 SST
16	Seat Disc	Buna-N or Teflon
17	Piston	Brass, SST or Monel
18	O-ring	Buna-N
19	Body	Bronze, Iron or SST
20	Gasket	Aramid Fiber or Teflon
21	Piston Spring	302 SST
22	Bottom Plug	Brass or SST

FIGURE 1



Neither Emerson, Emerson Automation Solutions, nor any of their affiliated entities assumes responsibility for the selection, use or maintenance of any product. Responsibility for proper selection, use, and maintenance of any product remains solely with the purchaser and end user.

Cash is a mark owned by one of the companies in the Emerson Automation Solutions business unit of Emerson Electric Co. Emerson Automation Solutions, Emerson and the Emerson logo are trademarks and service marks of Emerson Electric Co. All other marks are the property of their respective owners.

The contents of this publication are presented for informational purposes only, and while every effort has been made to ensure their accuracy, they are not to be construed as warranties or guarantees, express or implied, regarding the products or services described herein or their use or applicability. All sales are governed by our terms and conditions, which are available upon request. We reserve the right to modify or improve the designs or specifications of such products at any time without notice.